

Dfa

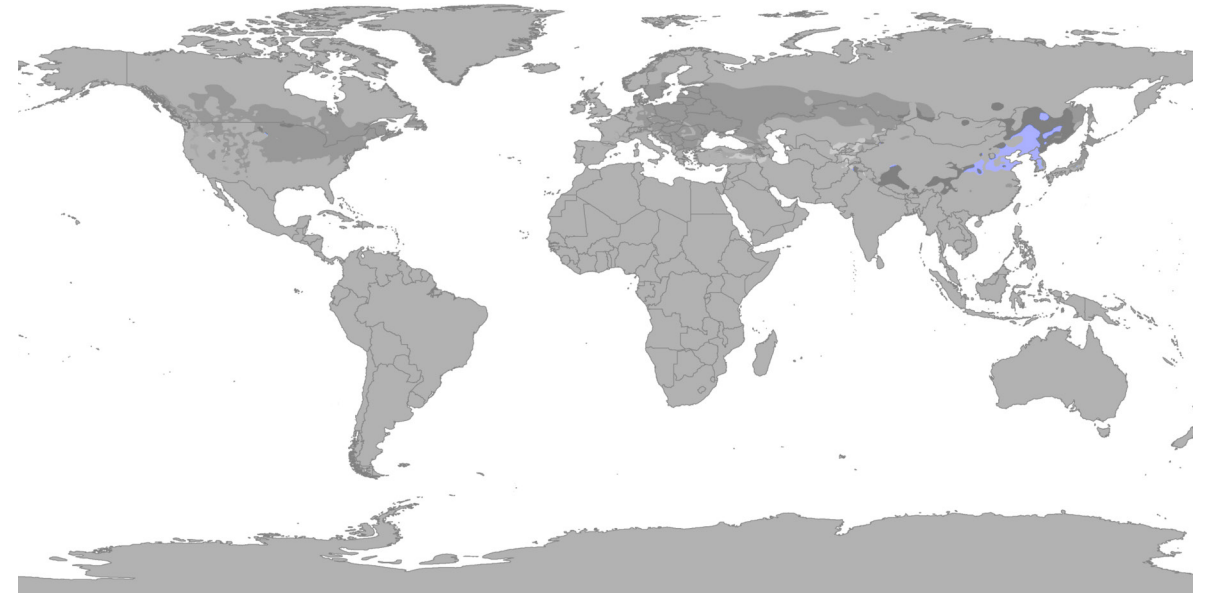
Hot-summer humid continental climate

Location Examples:

- Southern Ukraine
- Southern Federal District of Russia
 - Southern Moldova
 - Serbia

study
By Shijing Zhu

Hot-summer humid continental climate; coldest month averaging below $-0\text{ }^{\circ}\text{C}$ ($32\text{ }^{\circ}\text{F}$) (or $-3\text{ }^{\circ}\text{C}$ ($27\text{ }^{\circ}\text{F}$)), at least one month's average temperature above $22\text{ }^{\circ}\text{C}$ ($71.6\text{ }^{\circ}\text{F}$), and at least four months averaging above $10\text{ }^{\circ}\text{C}$ ($50\text{ }^{\circ}\text{F}$). No significant precipitation difference between seasons (neither abovementioned set of conditions fulfilled).



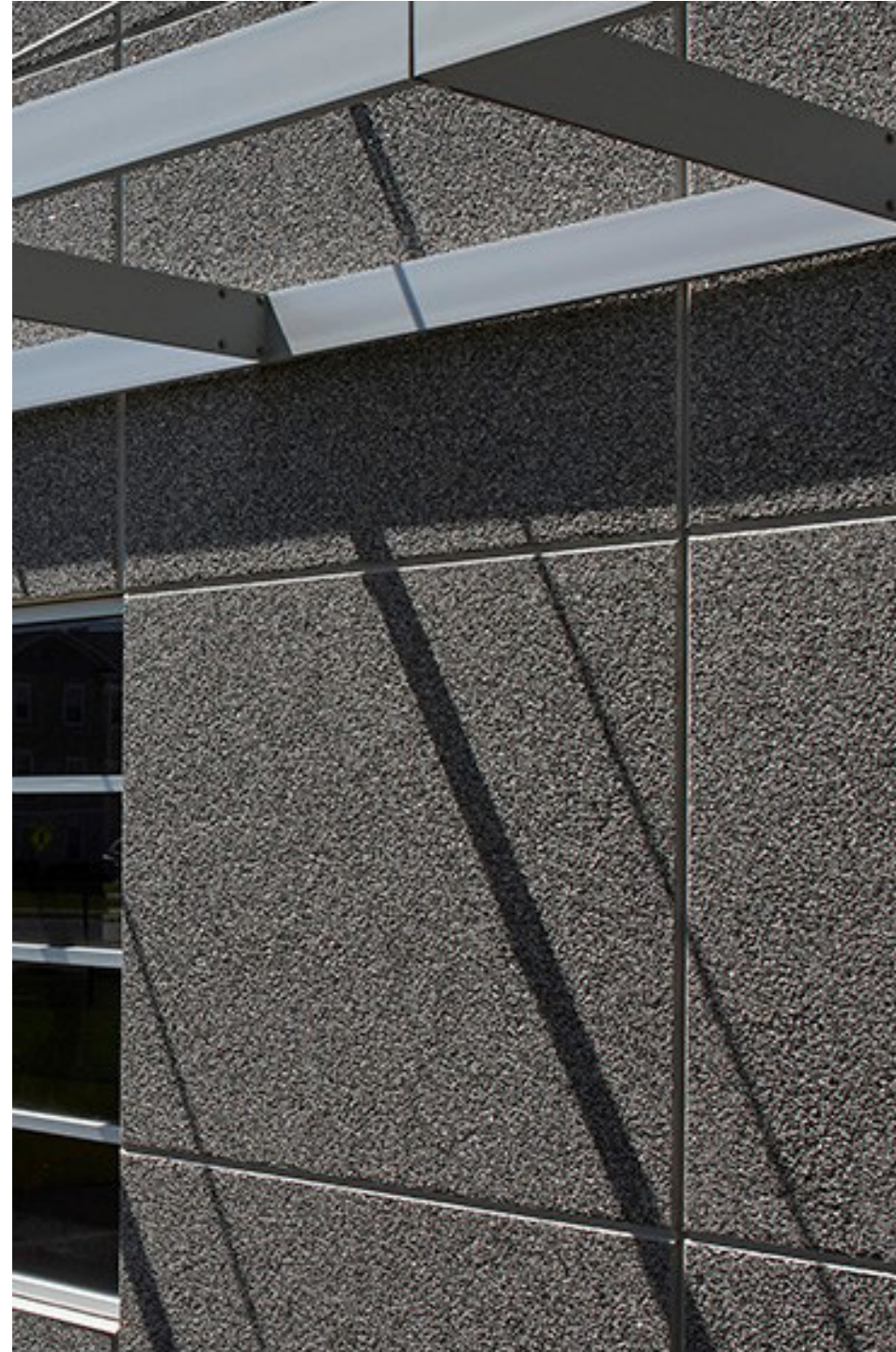
Sources:

https://en.wikipedia.org/wiki/K%C3%B6ppen_climate_classification

Banaadir Academy

case study
By Hua Yinghua

Minneapolis, MN



Architect: Krech O'Brien Mueller & Associates

Owner: Banaadir Academy

Year of completion: 2017

Climate: Hot Summer Continental Climate

Material of interest: Concrete

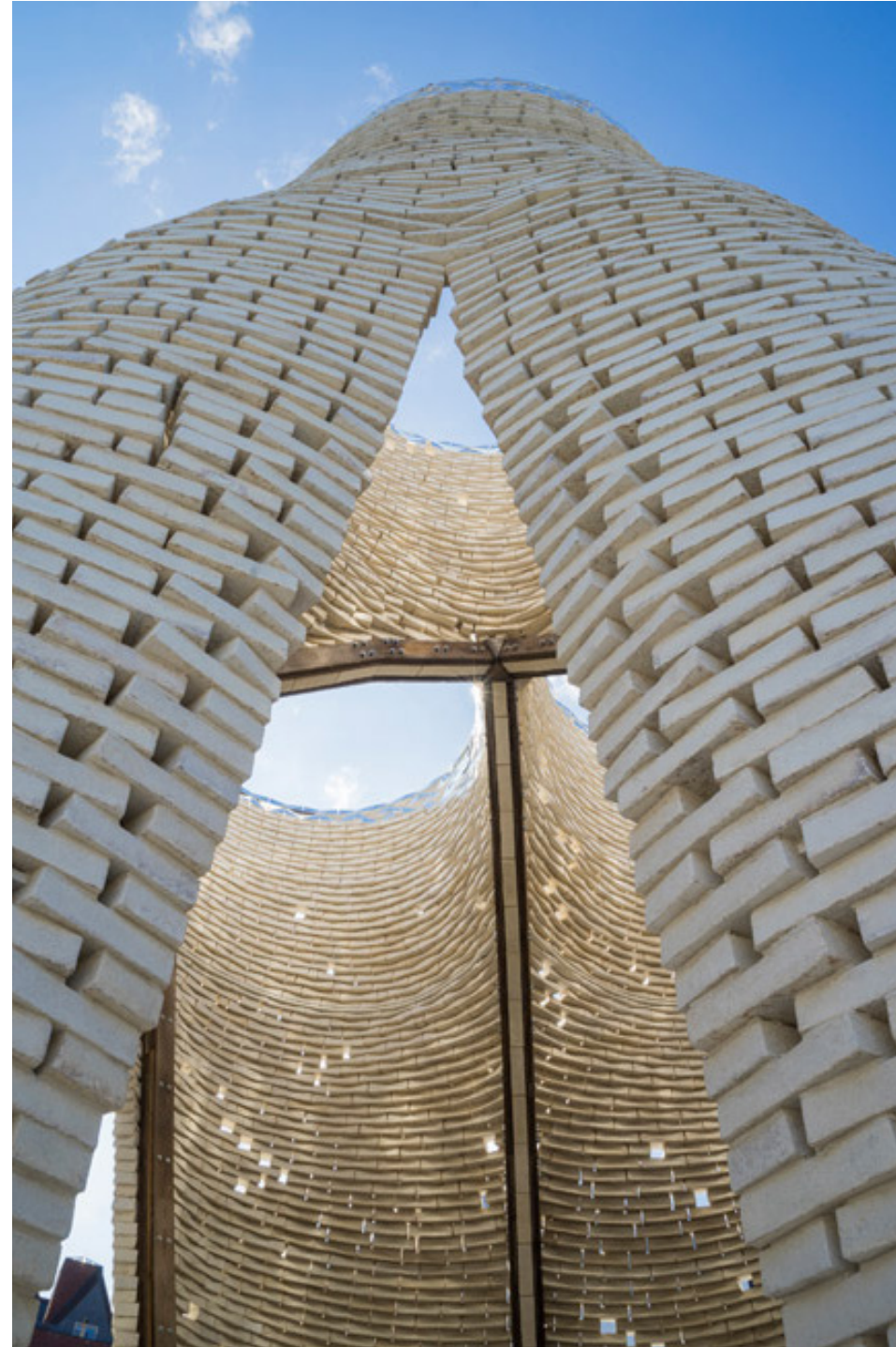
Application: exterior

Properties of material: Available in a wide variety of colors, textures, and finishes, insulated wall panels are ideal for any building project that needs stable protection and versatile functionality. Insulated Architectural Wall Panels are popular for schools, data centers, offices, warehouses, and storm shelters.

Sources:

<https://www.molin.com/project/banaadir-academy/>
<http://komainc.com/banaadir-academy-builds-addition-2/>

Location: NYC,US



Architect: The Living

Owner: N/A

Year of completion: 2014

Climate: Dfa

Material of interest: biodegradable materials

Application: Exterior

Properties of material: organic, biodegradable bricks consisting of no more than farm waste and a culture of fungus that is grown to fit a brick-shaped mold

Sources:

Architect Website: <http://www.thelivingnewyork.com/>
<https://www.azuremagazine.com/article/designs-near-future-building-blocks/>
<https://www.dezeen.com/2014/07/01/tower-of-grown-bio-bricks-by-the-living-opens-at-moma-ps1-gallery/>
<https://www.archdaily.com/521266/hy-fi-the-organic-mushroom-brick-tower-opens-at-moma-s-ps1-courtyard>

The Nelson-Atkins Museum of Art

case study
By Yu Yan

Location: Kansas City, MO, USA



Architect: Steven Holl

Owner: Bendheim, Tremco

Year of completion: 2007

Climate: Dfa

Material of interest: Glass

Application: Facades

Properties of material: The threaded movement between the light-gathering lenses of the new addition weaves the new building with the landscape in a fluid dynamism based on a sensitive relationship to its context.

Sources:

<https://www.archdaily.com/4369/the-nelson-atkins-museum-of-art-steven-holl-architects>

Principal Riverwalk Pavilion

case study
By Yanan Qian

Location: Des Moines, USA



Architect: Substance Architecture

Owner: N/A

Year of completion: 2013

Climate: Dfa

Material of interest: Zinc

Application: Exterior & Interior

Properties of material: The metal panel roof drops down along the west elevation and forms into a series of louvers that shade the interior from the sun, but still allow light through. The panels then form another right angle, jutting out to establish a protective canopy for the entrances to the public restrooms on the first floor. The louvers, the right-angle bends and the standing seam panels themselves all emphasize the foldability of the metal, giving lightness to the building.

Sources:

Architect Website: <http://www.substancearchitecture.com/>
<https://www.archdaily.com/501155/principal-riverwalk-hub-spot-substance-architecture>

SOS Children's Villages

case study
By Yuhui Xiong

Location: Chicago, IL, USA



Architect: Studio Gang

Owner: SOS Children's Villages

Year of completion: 2017

Climate: Hot-summer humid continental climate (Dfa)

Material of interest: Recycled Material

Application: Exterior

Properties of material: Concrete is layered in bands with color variation to reveal its liquid nature

Sources:

<https://www.archdaily.com/28636/sos-children%25e2%2580%2599s-villages-lavezzorio-community-center-studio-gang-architects>