

Cfa

Humid Subtropical Climate

Location Examples:

- Hong Kong, China
- Tokyo, Japan
- New Delhi, India
 - Gilan, Iran
- Orlando, Florida

study
By Sarah Fahey

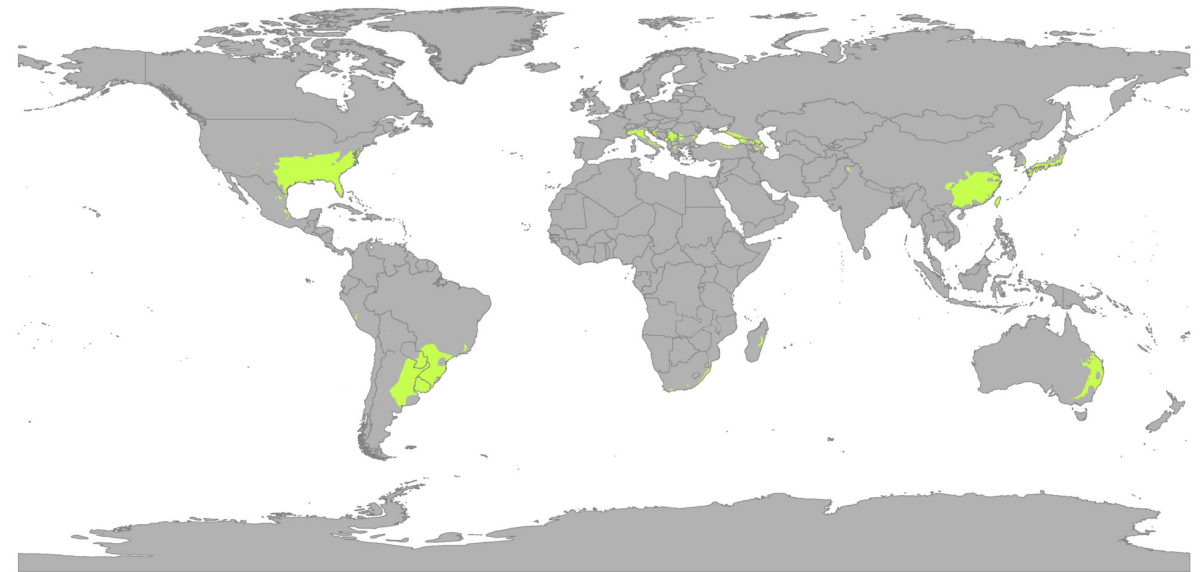
A humid subtropical climate zones are characterized by hot and humid summers, and mild winters. Locations in this climate experience seasons. Temperatures in the summer months average 72 °F or hotter and colder months range from 32-64 °F.

Locations in this zone are generally located at or near coastal regions and next to tropical climates; however, in places such as China and the United states extend further inland.

Because of the seasons and pleasant temperatures building happens year round and with a large variety of building materials.

Sources:

https://en.wikipedia.org/wiki/Humid_subtropical_climate



Toyota, Japan



Architect: Katsutoshi Sasaki + Associates

Owner: Katsutoshi Sasaki

Year of completion: 2017

Climate: Humid Subtropical Climate

Material of interest: Wood

Application: exterior & interior

Properties of material: In contrast to the dark exterior facade of painted wooden planks, the interior is lined with natural Falcata plywood. Because of its Various types of beautiful colours and resistance to warping, cedar can also be used for interior panelling in rooms around the house.

Sources:

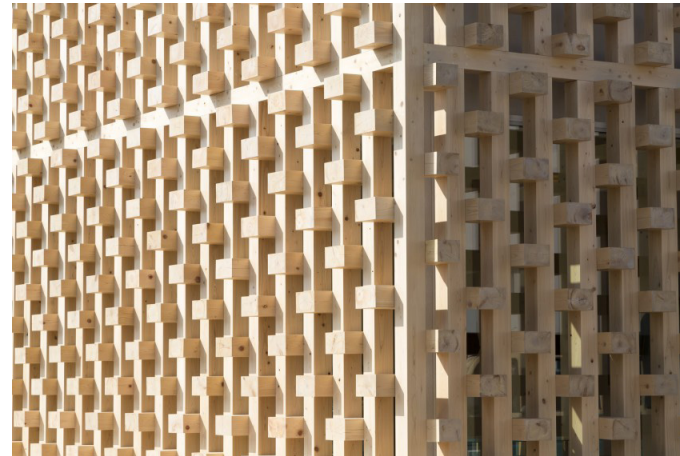
<https://www.dezeen.com/2018/08/31/t-noie-minimalist-house-japan-katsutoshi-sasaki>

<http://www.sasaki-as.com/works/18tate/tatenoie.htm>

120 x 120 Forest

case study
By Sarah Fahey

Location: Tokyo, Japan



Architect: Kengo Kuma & Associates

Owner: N/A

Year of completion: 2018

Climate: Humid Subtropical Climate

Material of interest: Wood - Cypress

Application: Exterior & Interior

Properties of material: Rot resistant, durable

Sources:

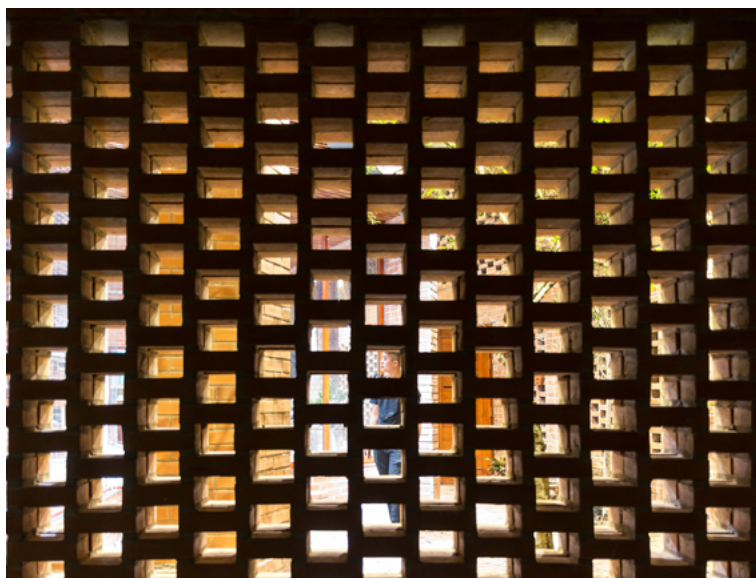
<http://kkaa.co.jp/works/architecture/120x120-forest/>
https://www.archdaily.com/902080/mahal-lat-residential-building-no3-caat-studio?ad_medium=gallery



Brick Cave

case study
By Zhuoying Chen

Location: Đông Anh, Vietnam



Architect: H&P Architects

Owner: N/A

Year of completion: 2017

Climate: Humid Subtropical Climate

Material of interest: Terracotta bricks

Application: Envelope

Properties of material:

- a local material and widely used in rural areas of Viet-nam, cheap
- flexible, easy to form different patterns
- adjust temperature
- simple manual constructed

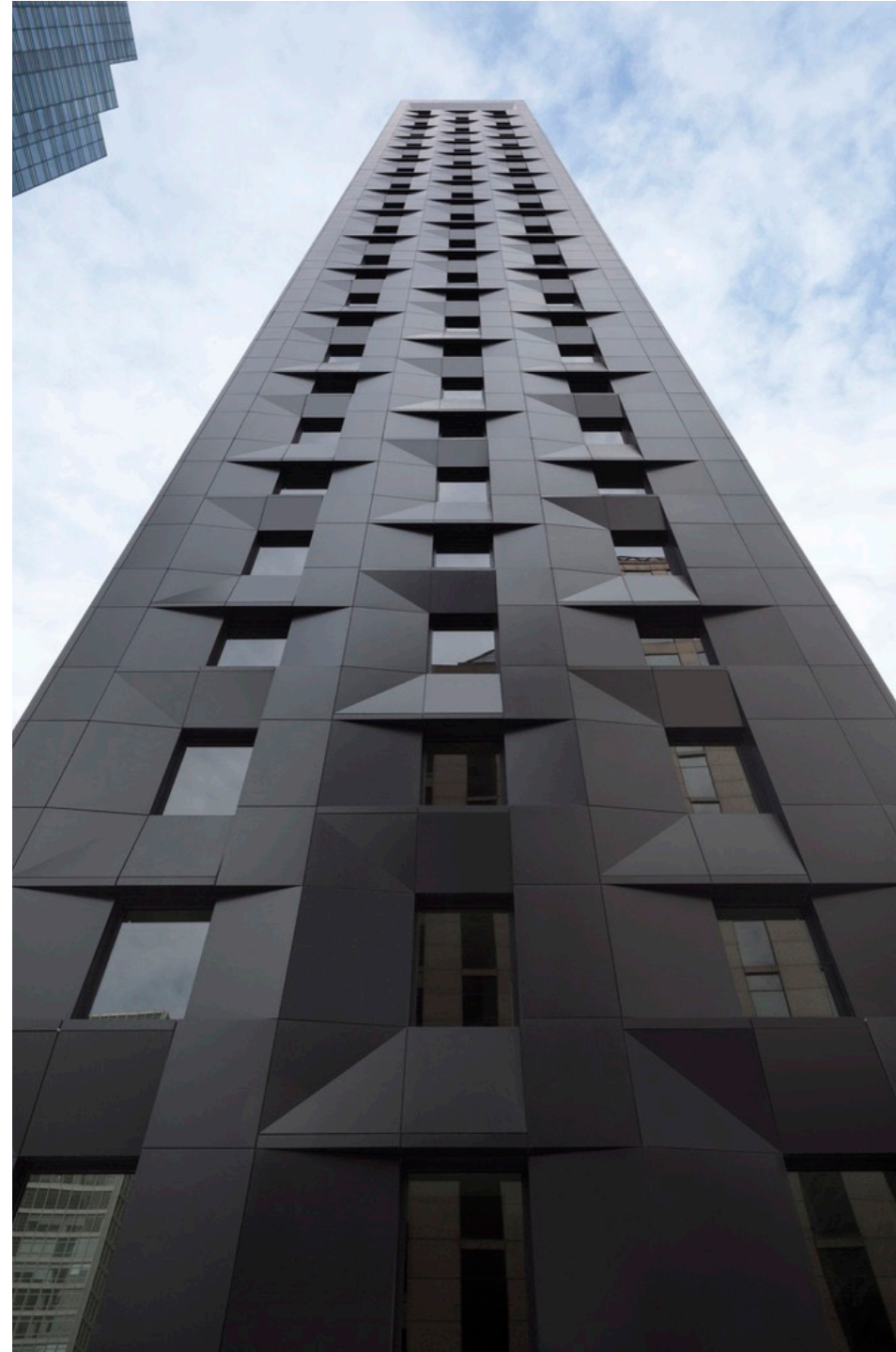
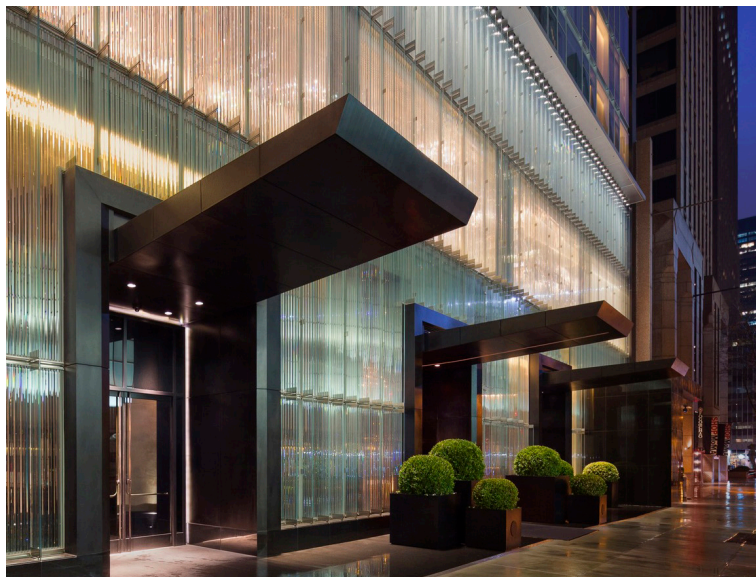
Sources:

<https://www.archdaily.com/892432/brick-cave-h-and-p-architects>

Baccarat Hotel & Residences

case study
By Yanan Qian

Location: New York, United States



Architect: SOM

Owner: N/A

Year of completion: 2015

Climate: Humid Subtropical Climate

Material of interest: Aluminum

Application: Exterior

Properties of material: The eastern and western elevations—primary structural elements of the tower—are sheathed in faceted, jet-black Reynobond aluminum composite material (ACM) from Alcoa Architectural Products, Norcross, Ga. These solid surfaces frame the reflective northern and southern façades, clad in shimmering glass. Metal panels were selected for the eastern and western sheer walls to express the faceted design of the façade, which dynamically reflects sunlight throughout the day.

Sources:

Architect Website: <https://www.som.com/>
<https://www.archdaily.com/780334/baccarat-hotel-and-residences-som>
<https://www.metalarchitecture.com/articles/big-apple-achievement>

Rio Vista Residence

case study By
Ruizhu Han

Location: Dallas



Architect: Buchanan Architecture

Owner: N/A

Year of completion: 2018

Climate: Humid Subtropical Climate

Material of interest: Corrugated-steel, Alusion

Application: Exterior

Properties of material: Buchanan Architecture created three segments in the entrance wing, including a courtyard lined with perforated walls. The material is a stabilised aluminium foam called Alusion, and is created by injecting air into molten metal to create pockets for filtering natural light and air.

Sources:

<https://www.dezeen.com/2018/09/28/rio-vista-residence-buchanan-architecture-dallas-texas/>

Fort Worth Camera Studio

case study By
Ruizhu Han

Forth Worth, Texas



Architect: Ibañez Shaw Architecture

Owner: Fort Worth Camera Studio

Year of completion: 2018

Climate: Humid Subtropical Climate

Material of interest: Concrete

Application: Exterior

Properties of material: The street-facing wall of Ibañez Shaw Architecture's concrete building is punctured with seven lines of holes that vary in size, referencing the different "standard apertures" used to vary amount of light able to reach a camera lens.

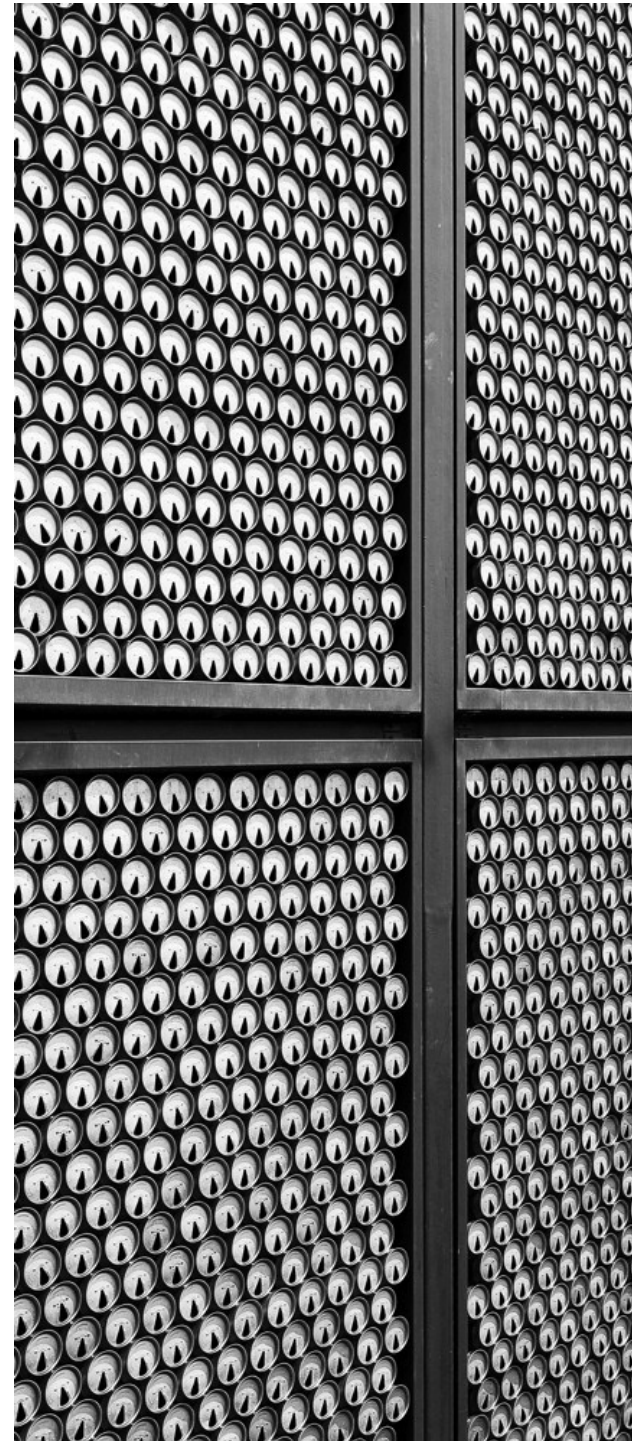
Sources:

<https://www.dezeen.com/2018/08/23/fort-worth-camera-studios-ibanez-shaw-texas-concrete/>

Can Cube

case study
By Sarah Fahey

Location: Shanghai, China



Architect: Archi Union Architects Inc

Owner: N/A

Year of completion: 2010

Climate: Humid Subtropical Climate

Material of interest: Aluminum Carbonated Drink Cans

Application: Exterior Facade

Aluminum cans are encased within an aluminum frame.

Properties of material: Sustainable- by using the cans as is no additional processing is needed therefore saving energy during typical recycling processes. Lightweight, adjustable

Sources:

<https://www.archdaily.com/85278/can-cube-archi-union-architects-inc/>

<https://www.archdaily.com/85278/can-cube-archi-union-architects-inc/>

Boolean Operator

case study
By Patrick Murray

Location: Jiangsu Sheng, China



Architect: Marc Fornes & THEVERYMANY

Owner: N/A

Year of completion: 2018

Climate: Humid Subtropical Climate

Material of interest: Metal

Application: skin

Properties of material: metal skin serves as a continuous surface throughout the pavilion while serving as structure, highly malleable

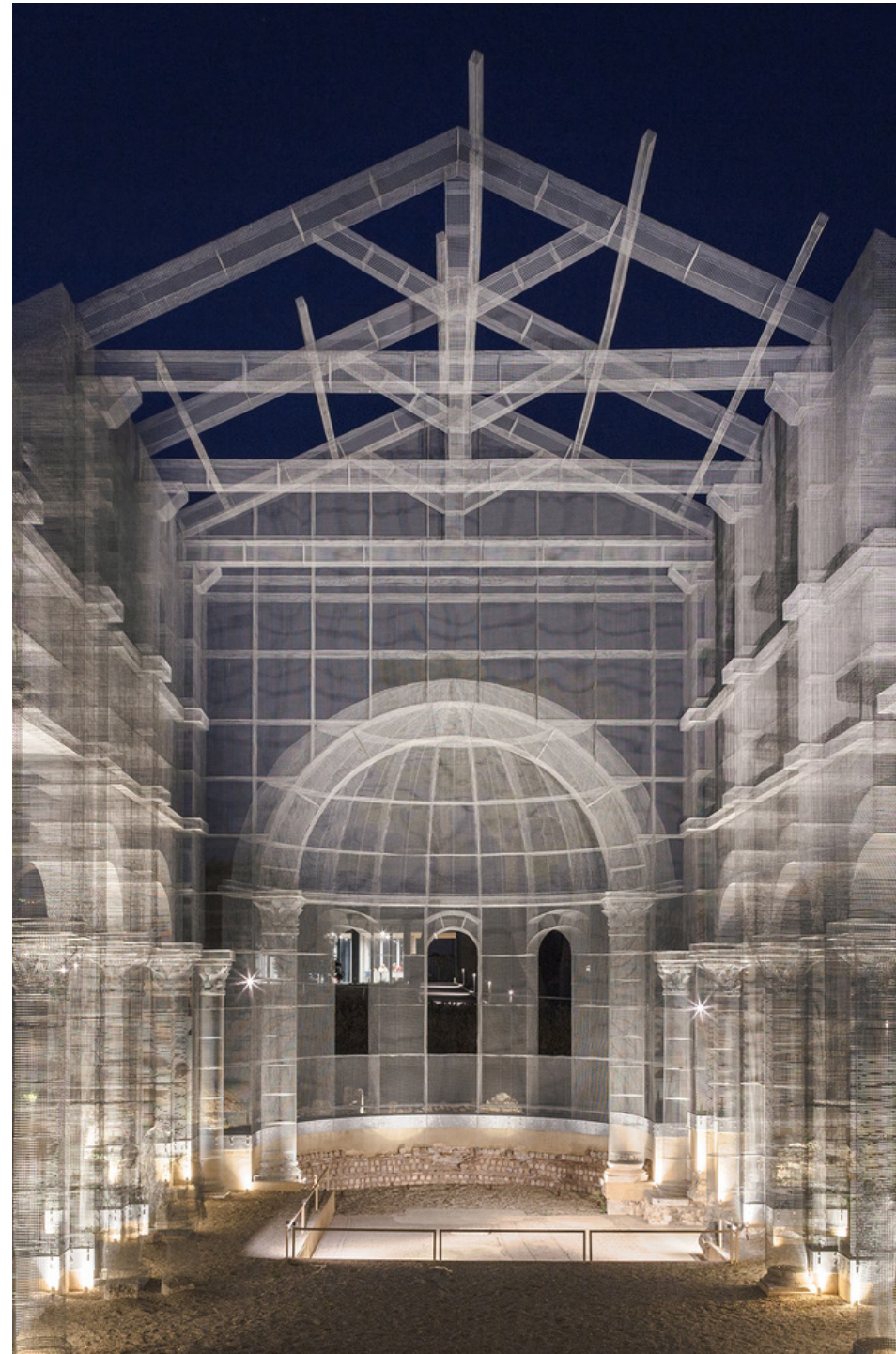
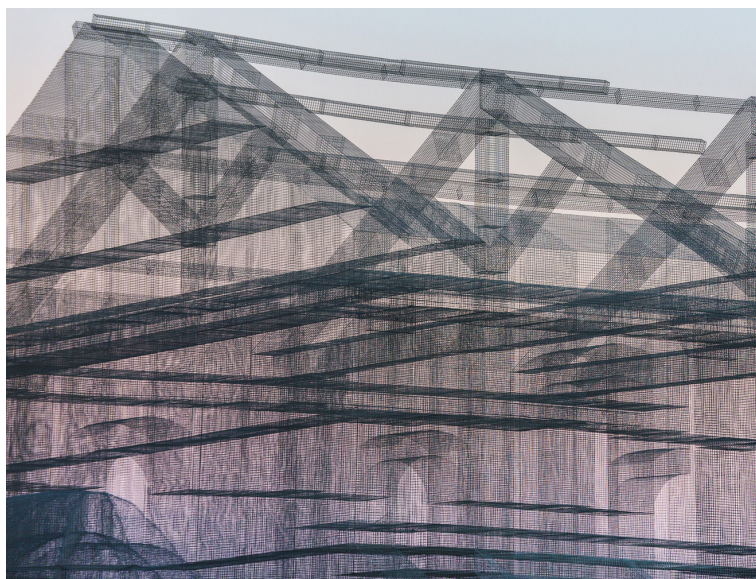
Sources:

<https://www.archdaily.com/902478/boolean-operator-marc-fornes-theverymany>

Basilica di Siponto

case study
By Rui Guo

Location: Manfredonia, Italy



Architect: Edoardo Tresoldi

Owner: N/A

Year of completion: 2016

Climate: Humid Subtropical Climate

Material of interest: ghost like appearance by metal wire

Application: Exterior, structure, interior

Properties of material: Metal wire depicted the shape and volume of historical buildings which blurs the lost history and presents. The Holographic projection like structure explored a brand new method for architecture to communicate.

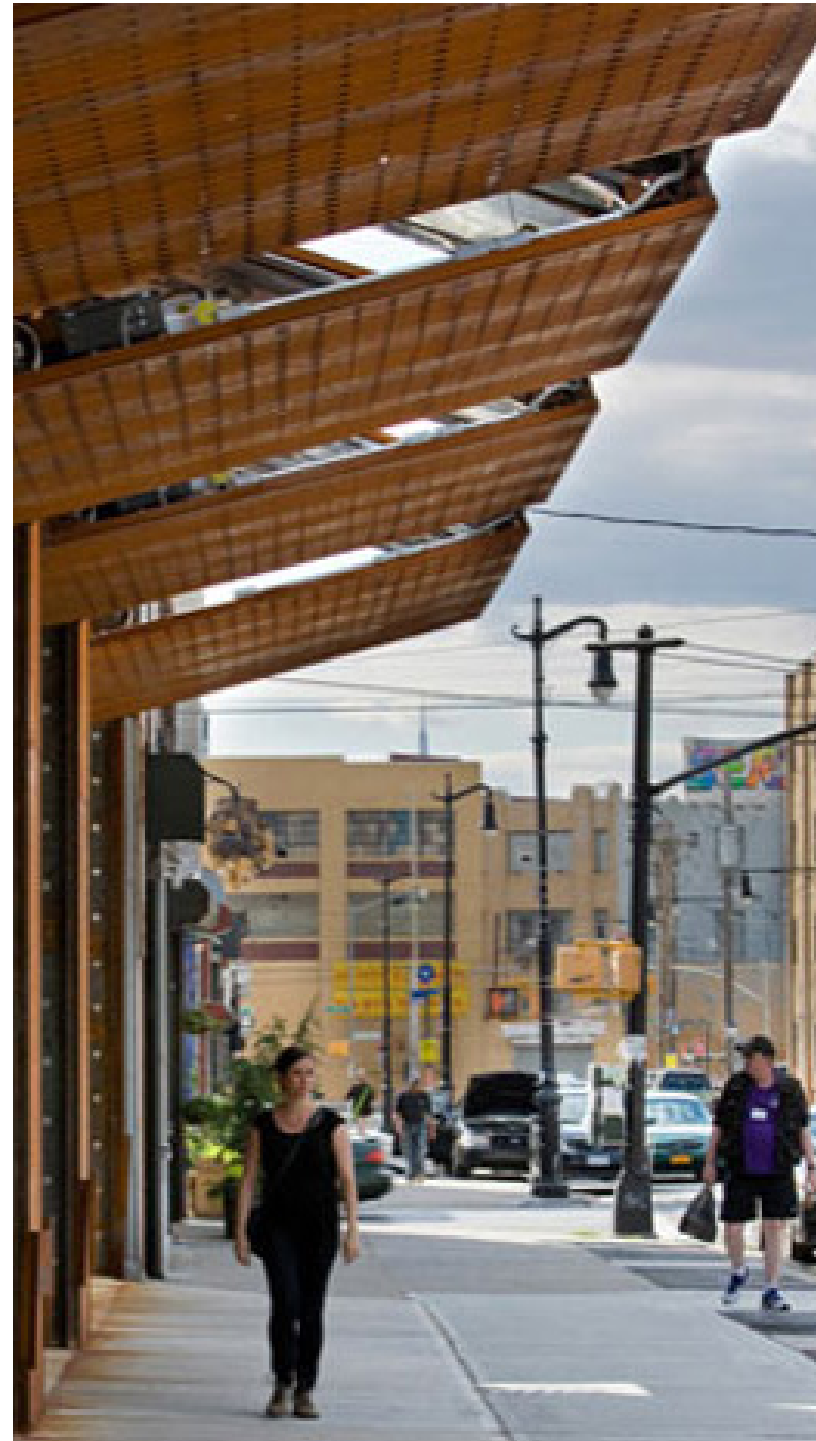
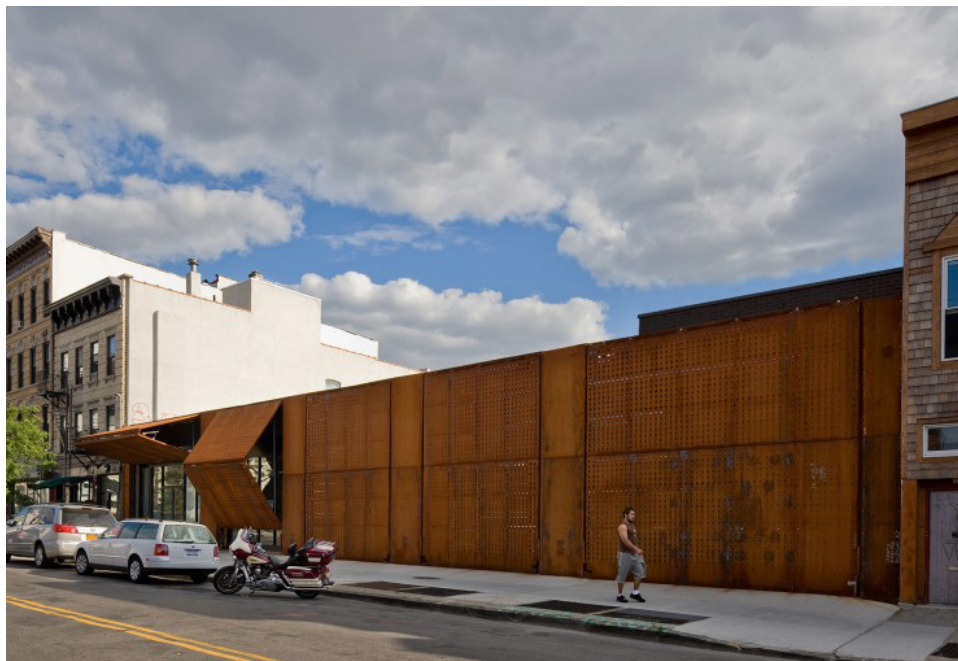
Sources:

<https://www.archdaily.com/903999/edoardo-tresoldi-basilica-di-siponto-awarded-the-gold-medal-for-italian-architecture>

The Wyckoff Exchange

case study
By Sarah Fahey

Location: Brooklyn, New York



Architect: Andre Kikoski Architect

Owner: Cayuga Capital Management

Year of completion: 2012

Climate: Humid Subtropical Climate

Material of interest: Corten Steel

Application: Exterior Facade

5 motorized Corten steel facade panels fold up to shelter the pedestrian sidewalk and reveal a glass skin for retail storefronts. The material was chosen to reflect the areas' industrial history.

Properties of material: industrial, artistic, raw, weathers - quickly forms protective layer of rust

Sources:

<https://www.architectmagazine.com/project-gallery/the-wyckoff-exchange>

<https://www.dezeen.com/2011/01/25/the-wyckoff-exchange-by-andre-kikoski-architect/>

Micasa Vol C

case study By
Ruizhu Han

Location: São Paulo, Brazil



Architect: Studio MK27

Owner: N/A

Year of completion: 2018

Climate: Humid Subtropical Climate

Material of interest: Polycarbonate

Application: Exterior

Properties of material: Two materials were used for the building's skin: polycarbonate sheets wrap the upper half, while white metal panels were used for the lower portion. The resulting effect is a building that glows by night and is enlivened with shadows by day.

Sources:

<https://www.dezeen.com/2018/05/29/studio-mk27-creates-minimalist-pavilion-micasa-vol-c-campus-sao-paulo/>

Louisiana Plantation House

case study By
Ruizhu Han

Location: Louisiana



Architect: Trahan Architects

Owner: N/A

Year of completion: 2018

Climate: Humid Subtropical Climate

Material of interest: Translucent Glass

Application: Exterior

Properties of material: "Translucent channel glass was selected to subtly obscure occupants within and around the new building like an impressionist painting – blurring the distinction between new and old, building and landscape," Trahan Architects said.

Sources:

<https://www.dezeen.com/2018/02/07/magnolia-mound-visitors-center-trahan-architects-baton-rouge-louisiana-usa/>

Location: Tokyo, Japan



Architect: Herzog & de Meuron

Owner: Prada

Year of completion: 2003

Climate: Humid Subtropical Climate

Material of interest: Glass

Application: Exterior

Properties of material: The glass is soft despite its sharp angles – as a result of its five-sided shape.

Sources:

<http://www.galinsky.com/buildings/pradatokyo/>

Fengying Stone Art Museum

case study
By Sarah Fahey

Location: Chongwu, Fujian, China



Architect: GOA

Owner: Fujian Fengying Stone Group

Year of completion: 2018

Climate: Humid Subtropical Climate

Material of interest: Stone

Application: Exterior

Properties of material: locally sourced, carve-able (somewhat soft)

Sources:

https://www.architectmagazine.com/project-gallery/fengying-stone-art-museum_o

<https://www.archdaily.com/900241/fengying-star-stone-art-museum-goa>

Corzuelas House

case study
By Patrick Murray

Location: Villa Allende, Argentina



Architect: Manuel Gonzalez Veglia, Dolores Menso

Owner: N/A

Year of completion: 2015

Climate: Humid Subtropical Climate

Material of interest: CMU

Application: Exterior Envelope

Properties of material: inexpensive; low maintenance; thermal insulation

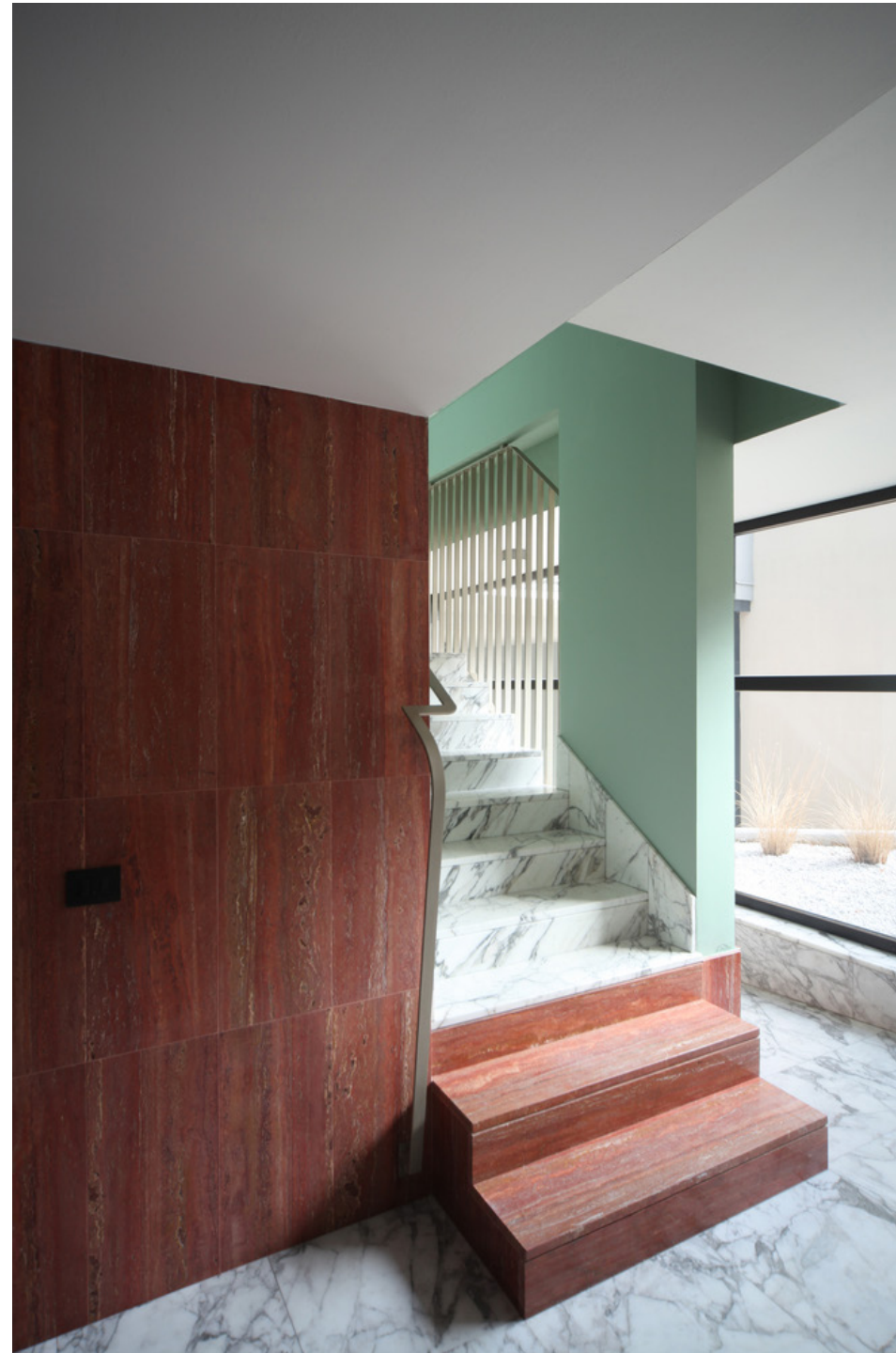
Sources:

<https://www.archdaily.com/785385/corzuelas-house-manuel-gonzalez-veglia-plus-dolores-menso>

Casa Valdieri

case study
By Sheng Yan

Location: Turin, Italy



Architect: UdA

Owner: N/A

Year of completion: 2016

Climate: Humid Subtropical Climate

Material of interest: Arabesque Marble

Application: Covered Exterior Cladding

Properties of material: Intended as extension of the shared interior to the public, Arabesque marbles cladding of red and white were used to extenuate the ground and announce processions of entry.

Sources:

Architect Website: www.uda.it

Web Magazine: divisare.com/projects/348981-marcante-testa-valter-camagna-carola-ripamonti-urban-decor

Photographer:

Carola Ripamonti